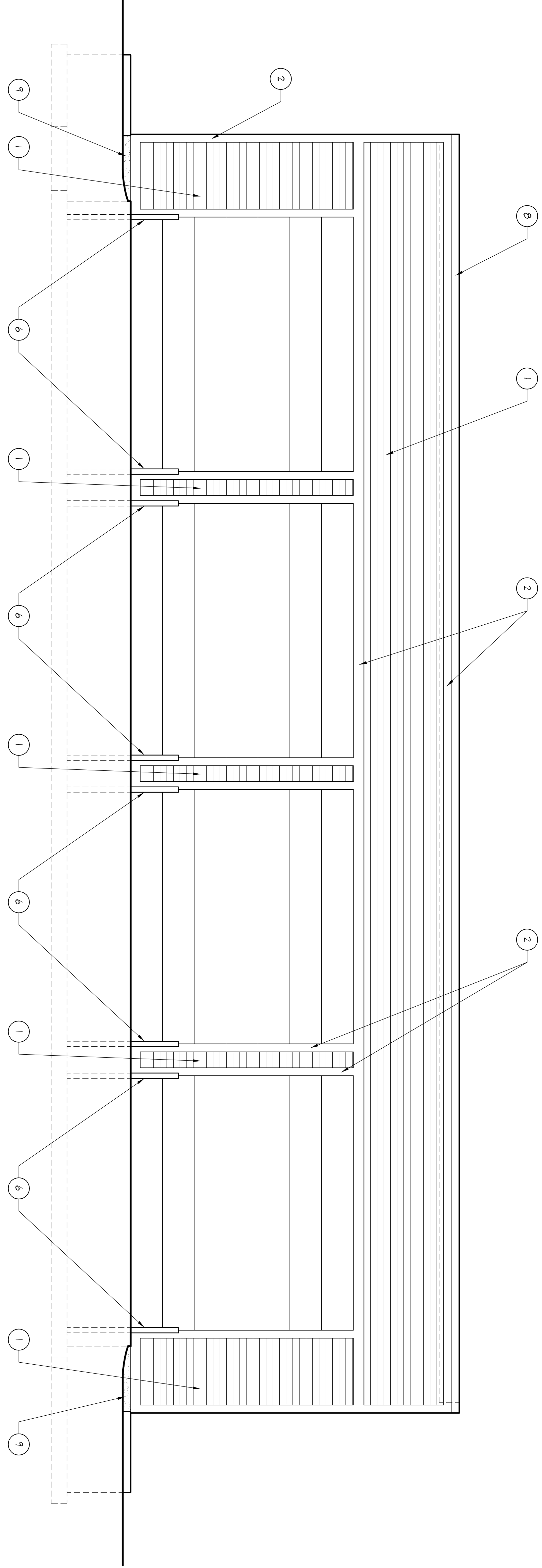
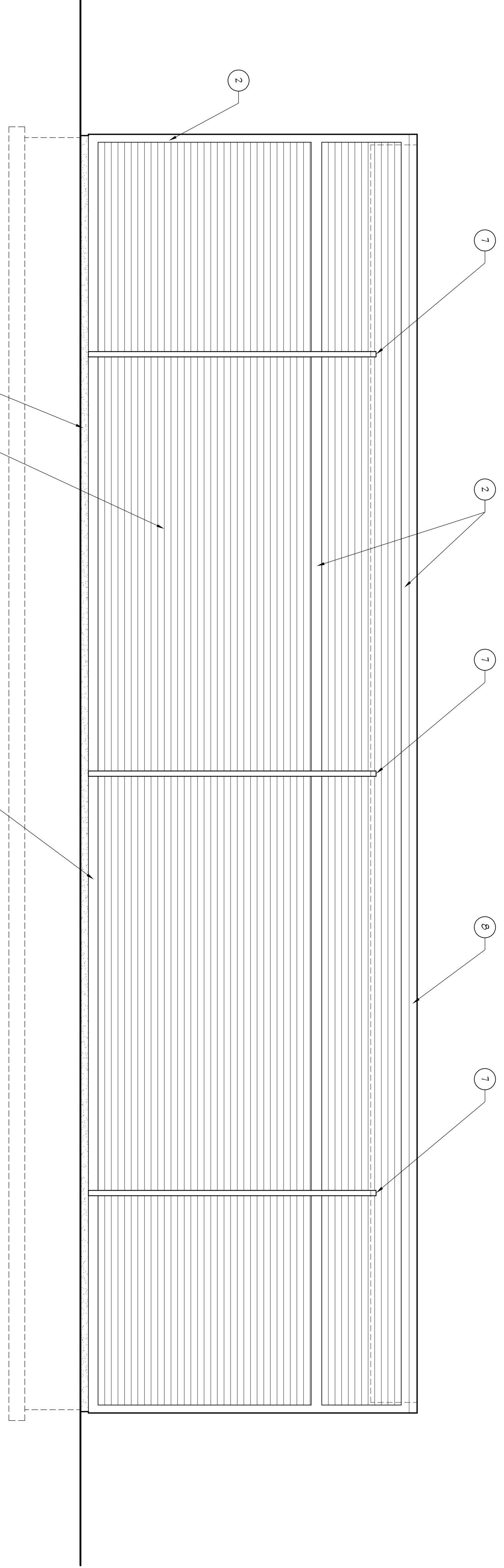


| ELEVATION NOTES |  |
|-----------------|--|
| 1               | CEMENT FIBER BOARD SING (5" SHOWING)   |
| 2               | CEMENT FIBER BOARD TRIM                |
| 3               | REFINISHED METAL FASCIA                |
| 4               | CONTINUOUS ROOF VENT                   |
| 5               | COMPOSITE SHINGLES                     |
| 6               | RPE SOLLARD                            |
| 7               | REFINISHED METAL SCUPPER AND DOWNSPOUT |
| 8               | REFINISHED METAL CAP                   |
| 9               | PROTECTION BOARD                       |



11 WEST ELEVATION  
4

SCALE 1/4" = 1'-0"



21 WEST ELEVATION  
4

SCALE 1/4" = 1'-0"

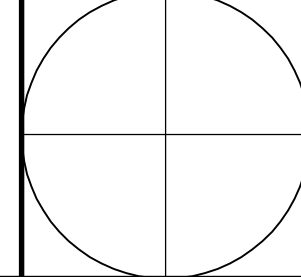
BUILDING ELEVATIONS - MAINTENANCE FACILITY

I Herely Certify That This Plan, Specification or Report Was Prepared By Me or Under My Direct Supervision and That I Am a Duly Licensed Architect Under the Laws of the State of Minnesota.  
DATE: ## REG. NO. 016355

DATE: 02-01-10  
REVISED  
808 Courthouse Square, St. Cloud, MN 56303  
(320) 252-3740 • fax (320) 255-0683  
6043 Hudson Road, Suite 150, Woodbury, MN 55125-1016  
(651) 459-9566 • fax (651) 458-5615  
www.gltarchitects.com  
Copyright 2010: Grooters Leapoldt Tideman Architects, P.C.



AVON TOWNSHIP FACILITIES  
QUEEN'S ROAD SITE  
AVON TOWNSHIP, MINNESOTA PROJECT 0933



A3.3