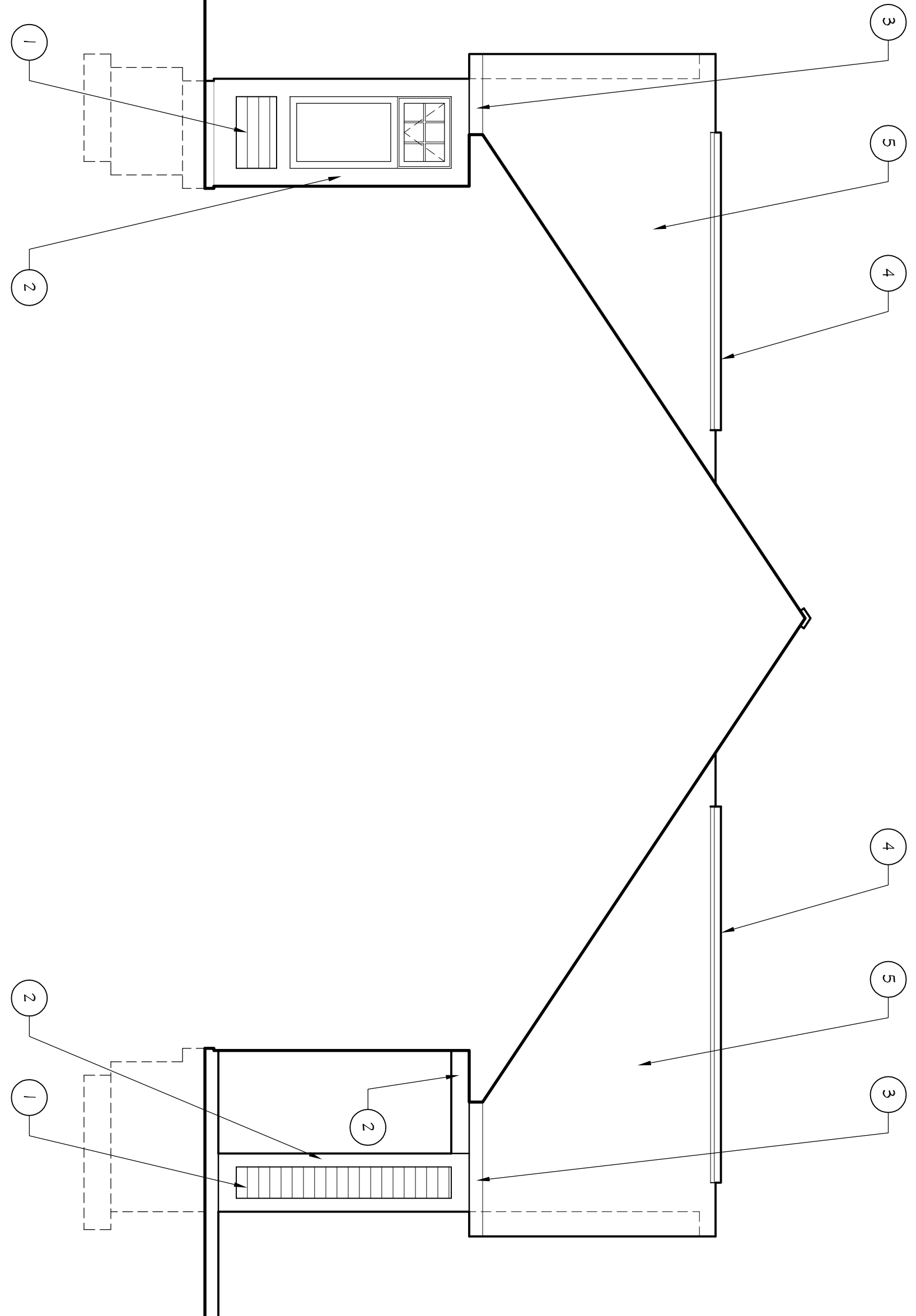
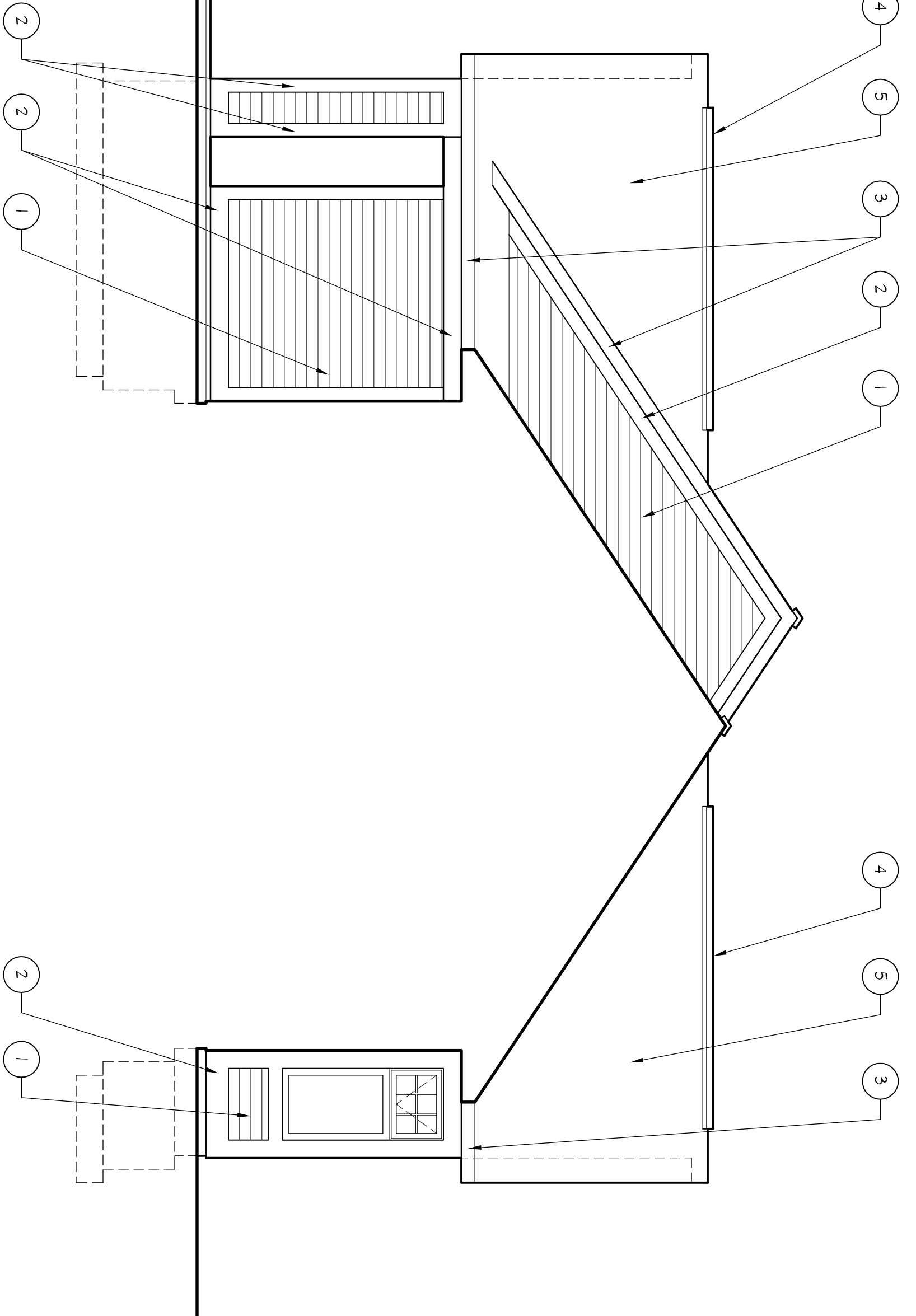
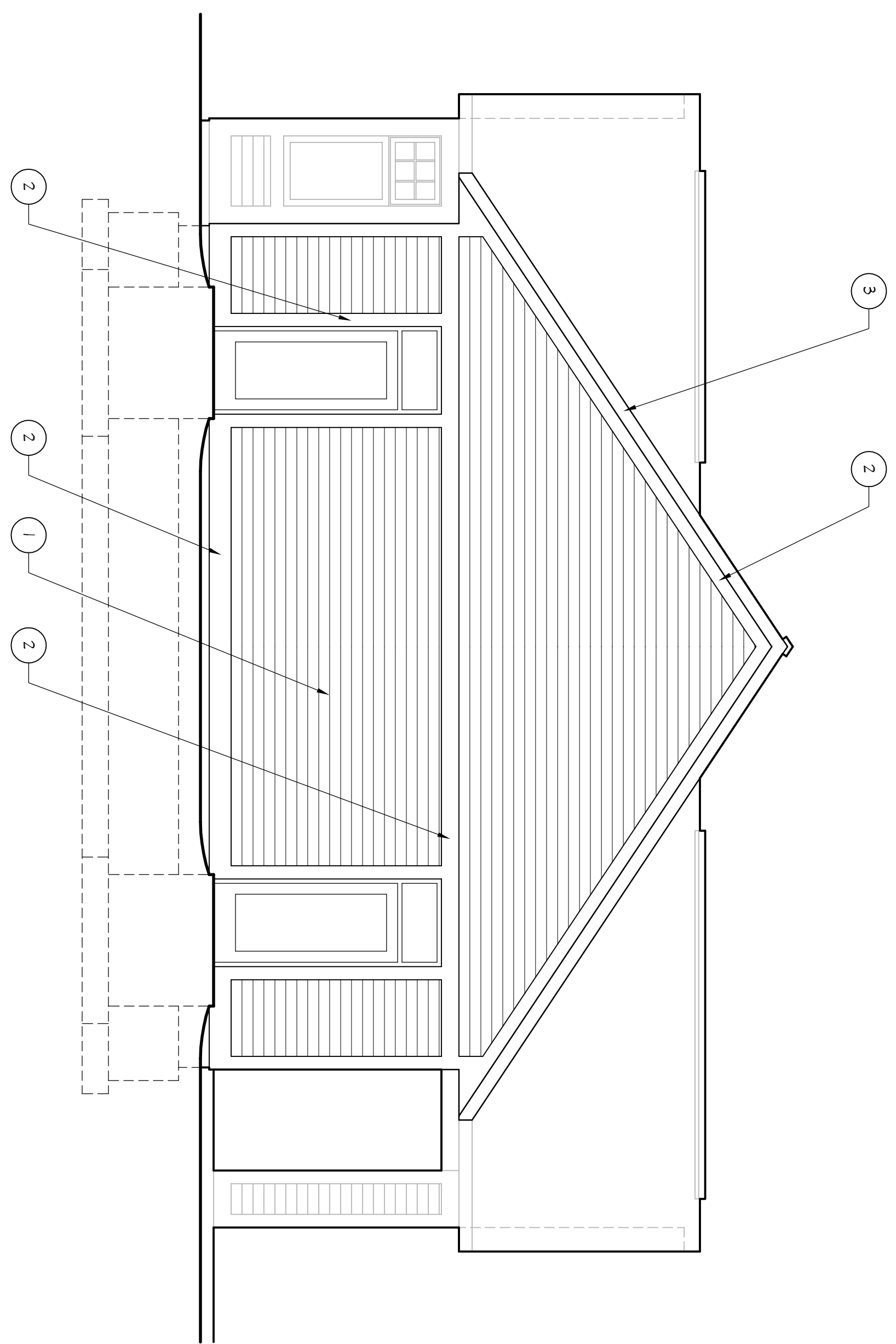


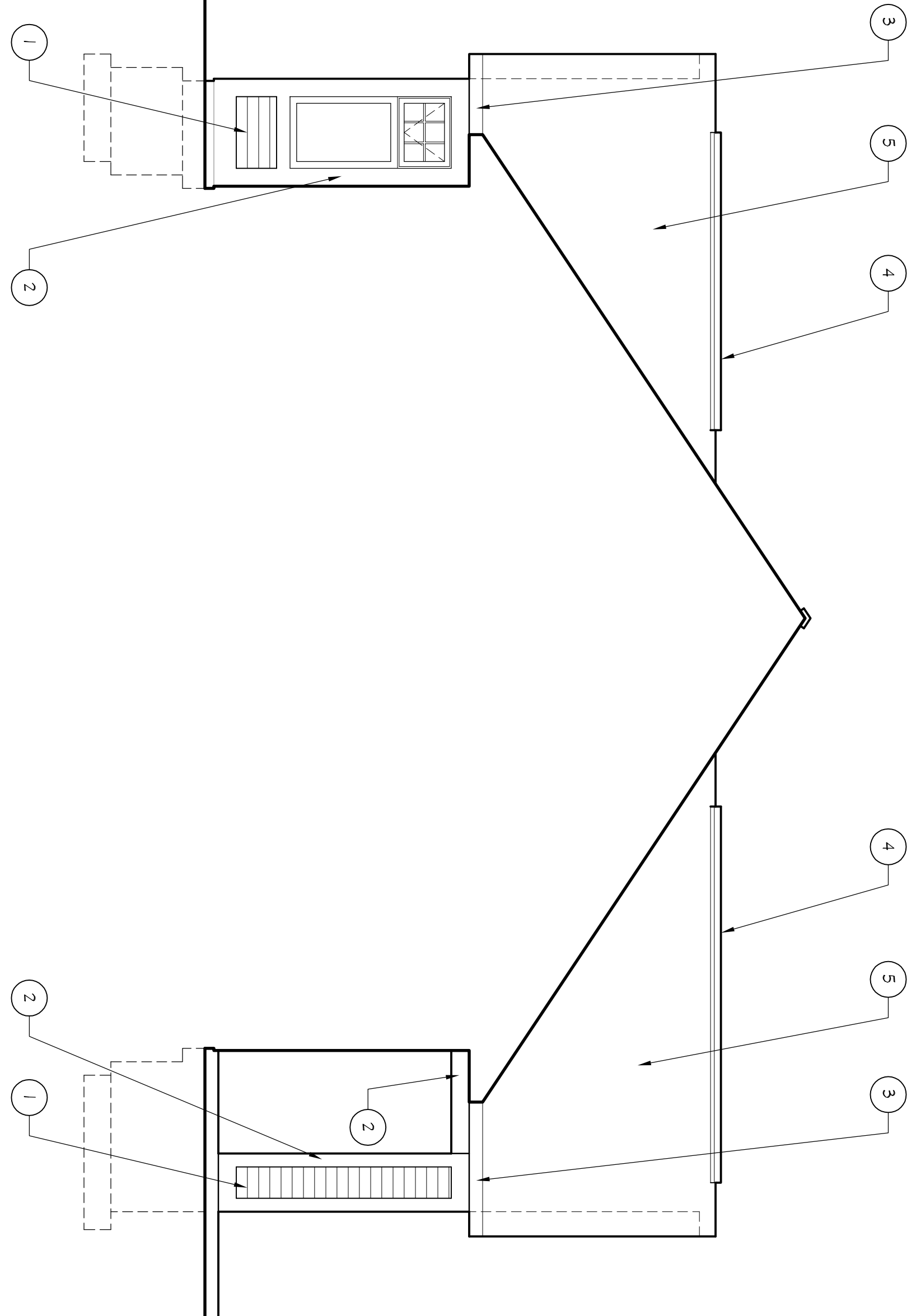
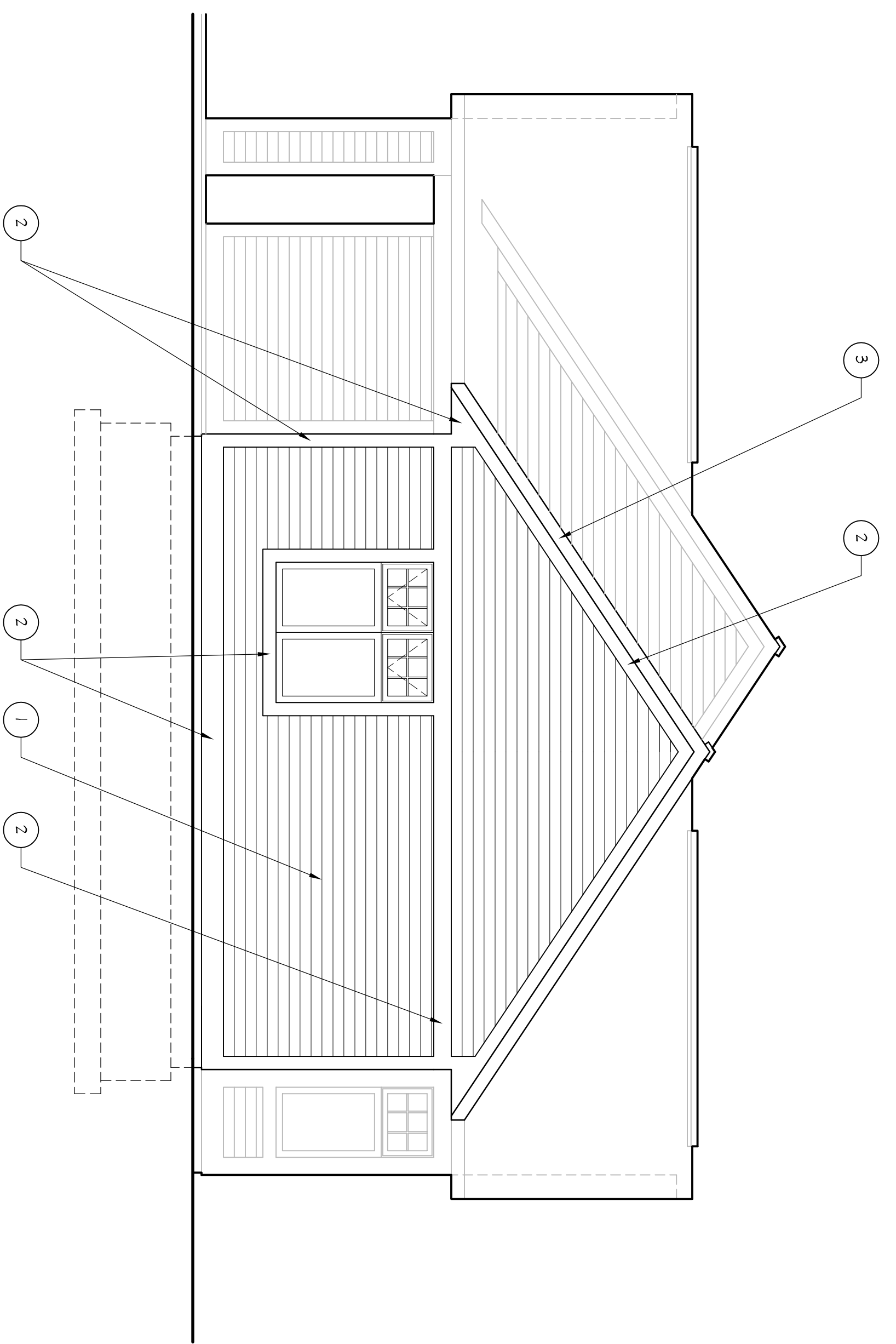
- ELEVATION NOTES**
- 1 CEMENT FIBER BOARD SIDING (5" SHOWING)
 - 2 CEMENT FIBER BOARD TRIM
 - 3 REFINISHED METAL FASCIA
 - 4 CONTINUOUS ROOF VENT
 - 5 COMPOSITE SHINGLES
 - 6 PIPE BOLLARD
 - 7 REFINISHED METAL SCUPPER AND DOWNSPOUT
 - 8 REFINISHED METAL CAP
 - 9 PROTECTION BOARD



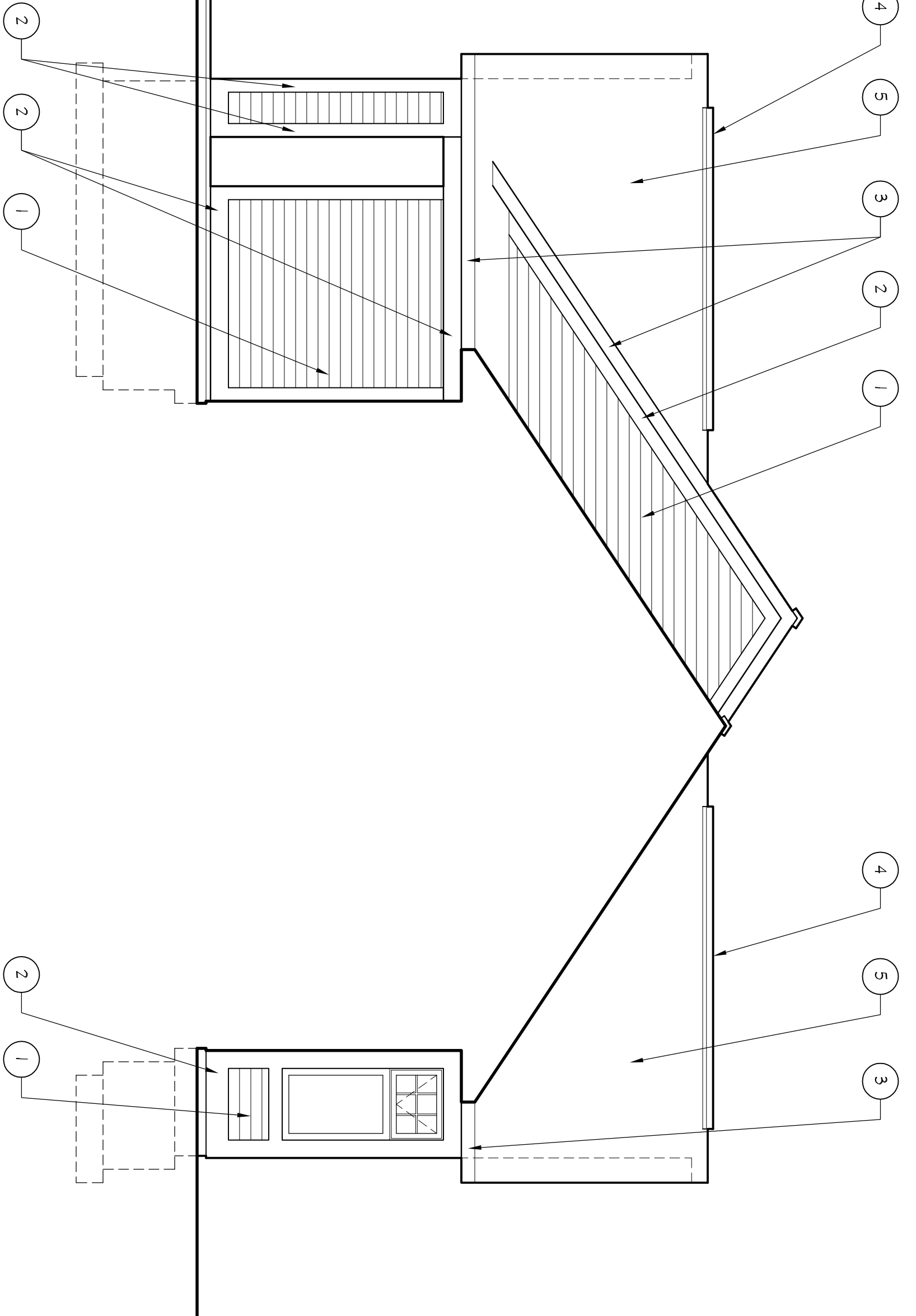
11 WEST ELEVATION
SCALE 1/4" = 1'-0"



21 EAST ELEVATION
SCALE 1/4" = 1'-0"



13 WEST ELEVATION
SCALE 1/4" = 1'-0"



23 EAST ELEVATION
SCALE 1/4" = 1'-0"

BUILDING ELEVATIONS - TOWN HALL

A3.2

**AVON TOWNSHIP FACILITIES
QUEEN'S ROAD SITE**
AVON TOWNSHIP, MINNESOTA PROJECT 0933



808 Courthouse Square, St. Cloud, MN 56303
(320) 252-3740 • fax (320) 255-0683
6043 Hudson Road, Suite 150, Woodbury, MN 55125-1016
(651) 439-9366 • fax (651) 438-5615
www.gltarchitects.com
Copyright 2010: Grooters Leapoldt Tideman Architects, P.C.

DATE 02-01-10
REVISED

I Hereby Certify That This Plan, Specification or Report Was Prepared By Me or Under My Direct Supervision and That I Am a Duly Licensed Architect Under the Laws of the State of Minnesota.
DATE: ## REG. NO. 016355