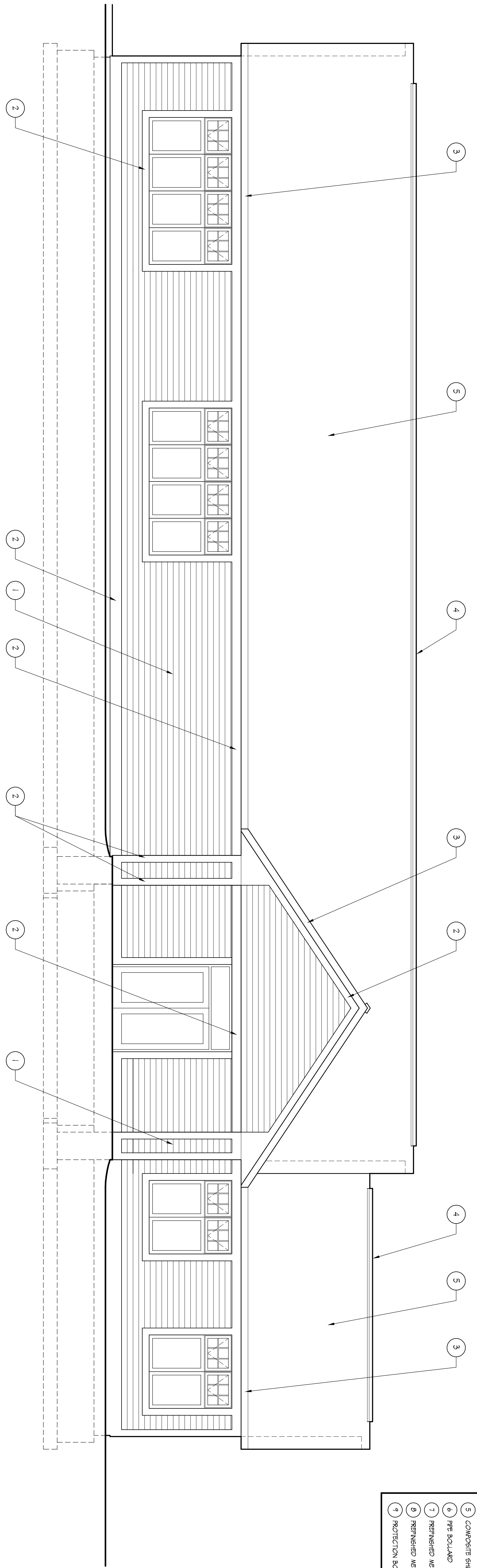
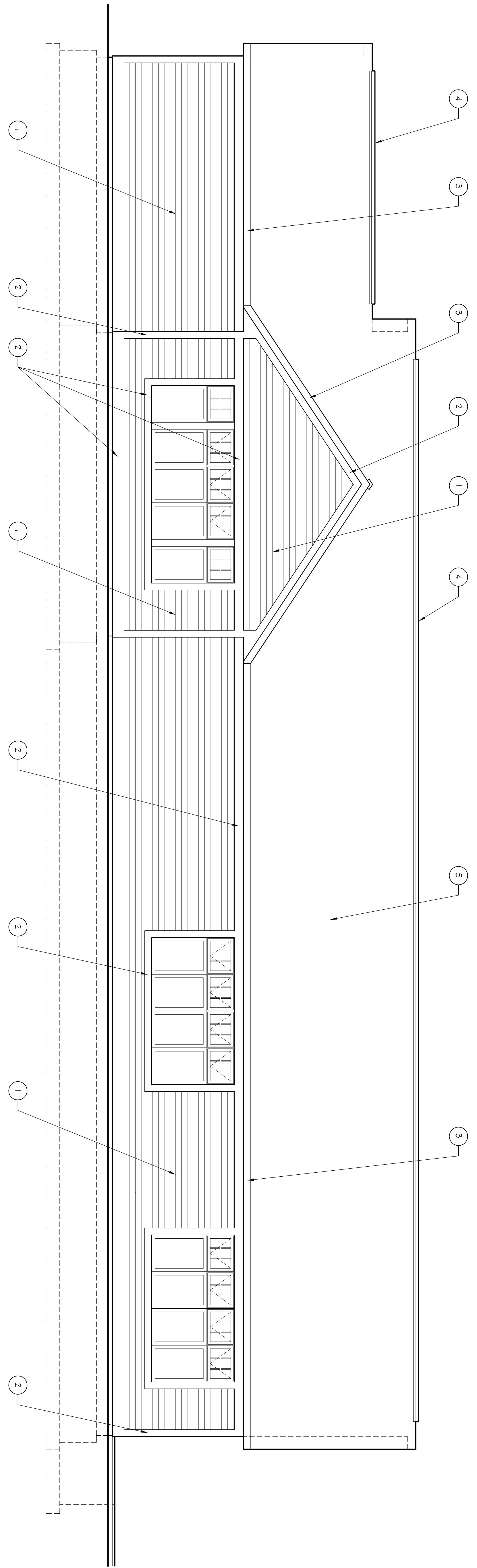


ELEVATION NOTES	
1	CEMENT FIBER BOARD SONS (5' SHOWN)
2	CEMENT FIBER BOARD TRIM
3	REFINISHED METAL FACIA
4	CONTINUOUS ROOF VENT
5	COMPOSITE SHINGLES
6	PPE BOLLARD
7	REFINISHED METAL SCUPPER AND DOWNSPOUT
8	REFINISHED METAL CAP
9	PROTECTION BOARD



11 SOUTH ELEVATION
0 4'

SCALE 1/4" = 1'-0"



21 NORTH ELEVATION
0 4'

SCALE 1/4" = 1'-0"

BUILDING ELEVATIONS - TOWN HALL

I Hereby Certify That This Plan, Specification or Report Was Prepared By Me or Under My Direct Supervision and That I Am a duly Licensed Architect Under the Laws of the State of Minnesota.
DATE: ## REG. NO. 016355

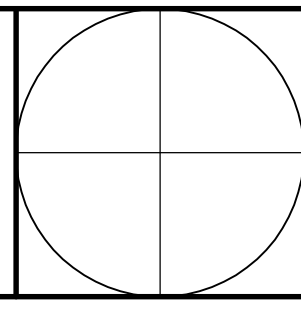
DATE 02-01-10
REVISED

808 Courthouse Square, St. Cloud, MN 56303
(320) 252-3740 • fax (320) 255-0683
6043 Hudson Road, Suite 150, Woodbury, MN 55125-1016
(651) 459-9566 • fax (651) 458-5615
www.gltarchitects.com
Copyright 2010: Grooters Leapaltd Tideman Architects, P.C.



PROJECT 0933

AVON TOWNSHIP FACILITIES
QUEEN'S ROAD SITE
AVON TOWNSHIP, MINNESOTA



A3.1